

A18 A200
C100 1/32" = 1'-0"

Site Plan



ARCHITECTURE INTERIORS PLANNING



**Catoosa County
Public Schools**

**8183-C CCPS
College-Career
Academy**

Catoosa Circle
Ringgold, Georgia

Date: October 5, 2020
Drawn: WPM
File: 8183-C

Revisions:

Key Plan

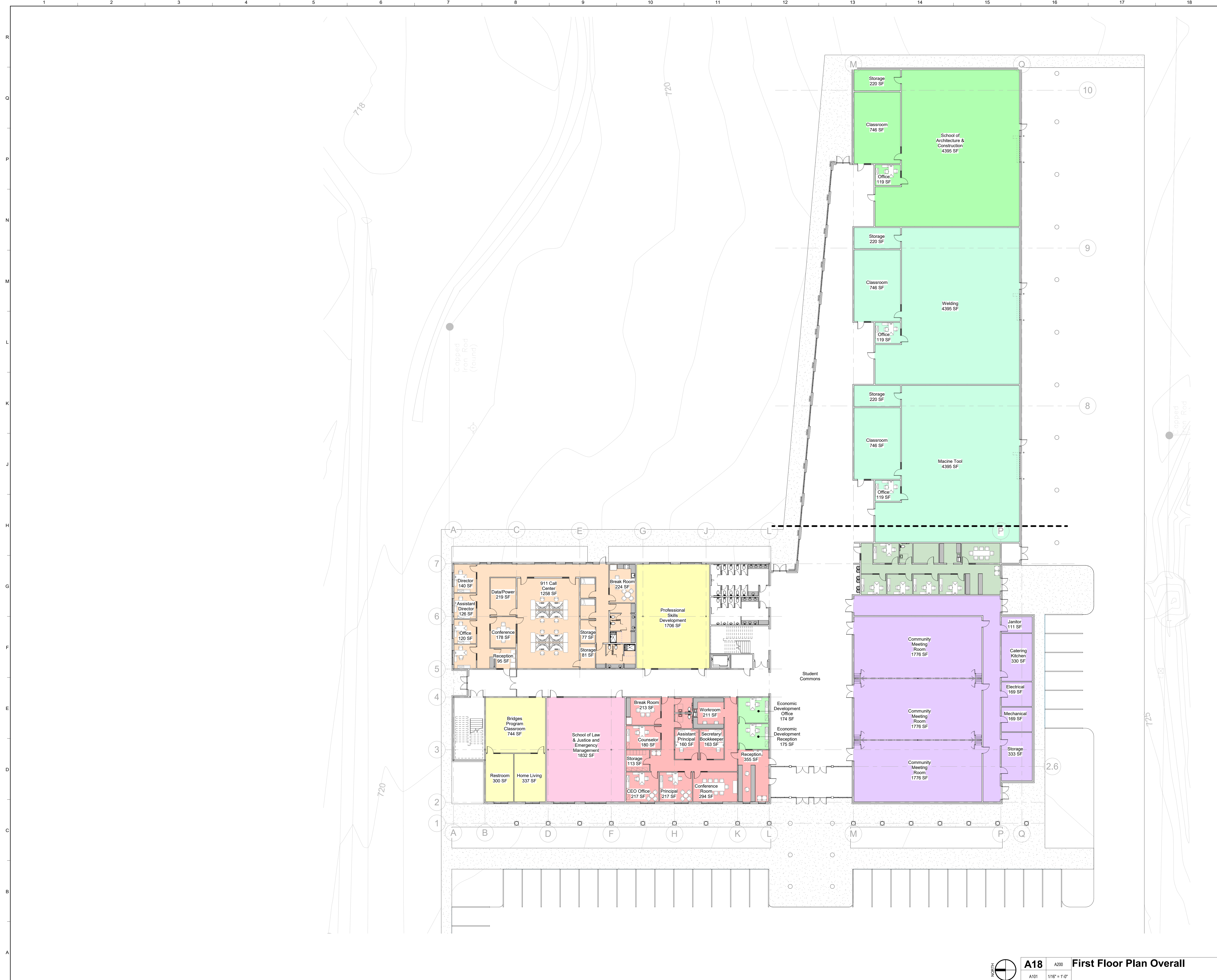
ALL DRAWINGS AND WRITTEN MATERIAL CONSTITUTE ORIGINAL WORK OF THE ARCHITECT AND MAY NOT BE DUPLICATED, USED, OR DISCLOSED WITHOUT CONSENT OF THE ARCHITECT. © 2020 DH&W ARCHITECTS. ALL RIGHTS RESERVED.

PRELIMINARY

Title:
Site Plan

Scale:
Sheet No.

C100



**8183-C CCPS
College-Career
Academy**

Catoosa Circle
Ringgold, Georgia

Date: October 5, 2020
 Drawn: WPM
 File: 8183-C

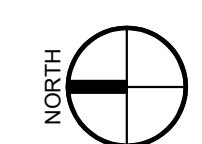
Revisions:

Key Plan

PRELIMINARY

Title:
First Floor Plan

Scale:
Sheet No.



A18 A200
A101 1/16" = 1'-0"

First Floor Plan Overall

A101

